

# EV12-22 (12V 22Ah)



Since 1993

Item Code: VRLA EV12022 T12  
EAN: 8717101003312

## Specifications

<b>Nominal Voltage</b>	12		
<b>Approx. Weight</b>	6.20 Kg (13.66 lbs)		
<b>Container Material</b>	ABS		
<b>Rated Capacity (25 °C)</b>	<b>22.00 Ah</b>	<b>20hr, 1,10A, 1.75V/cell</b>	
	21.30 Ah	10hr, 2,13A, 1.75V/cell	
	18.90 Ah	5hr, 3,78A, 1.75V/cell	
	17.13 Ah	3hr, 5,71A, 1.75V/cell	
	13.97 Ah	1hr, 13,97A, 1.60V/cell	
<b>Max Discharge Current</b>	264A (5s)		
<b>Internal Resistance</b>	Approx. 14.0m Ω		
<b>Cold Cranking Ampere (CCA)</b>	190A		
<b>Maximum Charge Current</b>	6.6A		
<b>Operating Temp. Range</b>	Discharge:	-20 °C ~ 60 °C	-4 °F ~ 140 °F
	Charge:	0 °C ~ 50 °C	32 °F ~ 122 °F
	Storage:	-20 °C ~ 60 °C	-4 °F ~ 140 °F
<b>Nominal operating temp. Range</b>	25±5°C (77± 9°F)		
<b>Effect of Temp. to Capacity</b>	40 °C	104 °C	103%
	25 °C	77 °C	100%
	0 °C	32 °C	86%
<b>Cycle Use</b>	14.6 V~14.8 V @ 25°C Temperature Compensation: -4mV/°C/Cell		
<b>Standby Use</b>	13.7 V~13.9 V 25°C Temperature Compensation: -3mV/°C/Cell		
<b>Self-Discharge</b>	Batteries may be stored for up to 6 months at 25°C (77°F) and then a freshening charge is required. For higher temperatures the time interval will be shorter.		



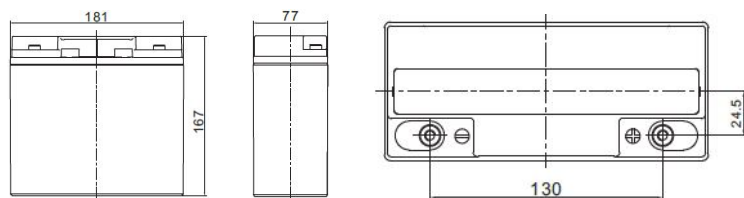
## Certificates / Standards

- UL Certified MH64495
- CE Certified
- Manufactured in certified production facilities ISO9001/ ISO14001/ OHSAS18001



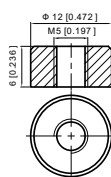
## Dimensions

### Layout



<b>Length</b>	181 mm
<b>Width</b>	77 mm
<b>Container Height</b>	167 mm
<b>Total Height</b>	167 mm

### Terminal



<b>Terminal</b>	T12
<b>Terminal Torque</b>	6 ~ 7 Nm
<b>Layout</b>	0

# EV12-22 (12V 22Ah)



Since 1993

## Constant Current Discharge Characteristics: Amperes (25 ° C)

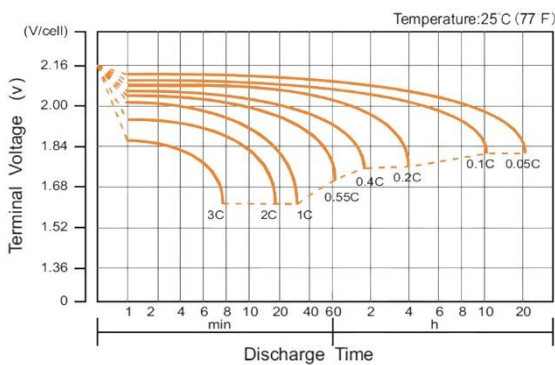
F.V / Time	10 min	15 min	30 min	1 hr	2 hr	3 hr	4 hr	5 hr	8 hr	10 hr	20 hr
1.85V	41.06	31.84	20.36	12.24	7.140	5.143	4.092	3.470	2.378	1.992	1.035
1.80V	47.47	36.24	22.25	13.26	7.669	5.483	4.334	3.653	2.490	2.076	1.074
1.75V	52.16	39.43	23.59	13.97	8.038	5.719	4.502	3.780	2.567	2.134	1.100
1.70V	55.67	41.81	24.56	14.49	8.305	5.890	4.622	3.870	2.623	2.175	1.120
1.65V	58.30	43.57	25.28	14.87	8.500	6.014	4.709	3.936	2.663	2.205	1.134
1.60V	60.30	44.92	25.82	15.16	8.647	6.107	4.775	3.986	2.693	2.228	1.144

## Constant Power Discharge Characteristics: Watts/ cell (25 ° C)

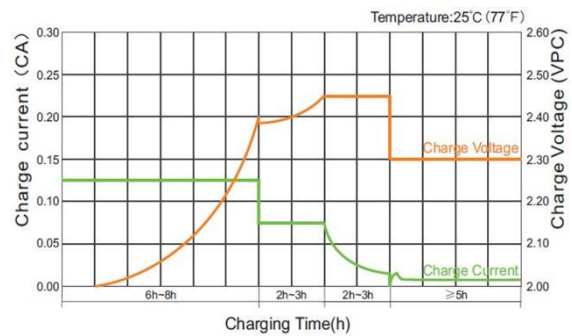
F.V / Time	10 min	15 min	30 min	1 hr	2 hr	3 hr	4 hr	5 hr	8 hr	10 hr	20 hr
1.85V	76.37	59.82	38.89	23.61	13.88	10.03	8.00	6.81	4.69	3.94	2.05
1.80V	86.75	67.14	42.09	25.39	14.83	10.65	8.45	7.14	4.91	4.10	2.13
1.75V	93.70	72.04	44.18	26.63	15.46	11.06	8.74	7.36	5.05	4.21	2.17
1.70V	98.23	75.27	45.53	27.48	15.90	11.35	8.94	7.51	5.14	4.29	2.21
1.65V	101.70	77.77	46.60	28.10	16.23	11.56	9.09	7.63	5.22	4.34	2.24
1.60V	102.50	78.52	46.90	28.34	16.39	11.66	9.17	7.68	5.26	4.38	2.25

**(Note)** The above characteristics data are average values obtained within three charge/discharge cycle not the minimum values. The battery must be fully charged before the capacity test. The C20 should reach 95% after the first cycle and 100% after the third cycle.

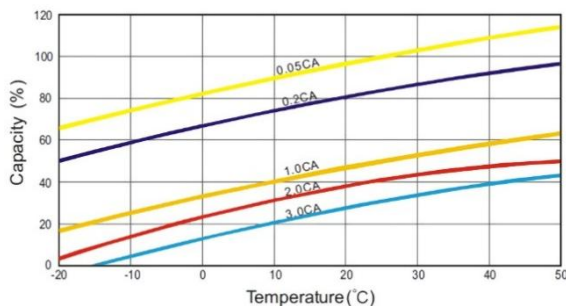
### Discharge Characteristic



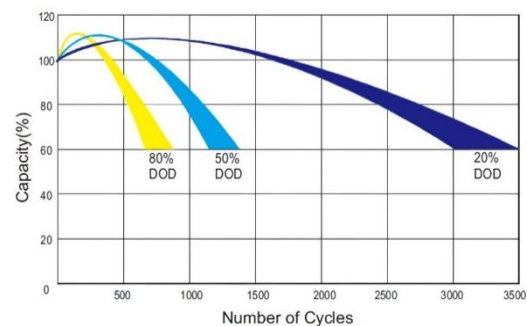
### Charging Characteristics (Cycle Use)



### Effects of Temperature on Capacity



### Cycle-life in Relation to Depth of Discharge



**(Note)** All above information shall be changed without prior notice, Landport Batteries reserves the right to explain and update the latest information.